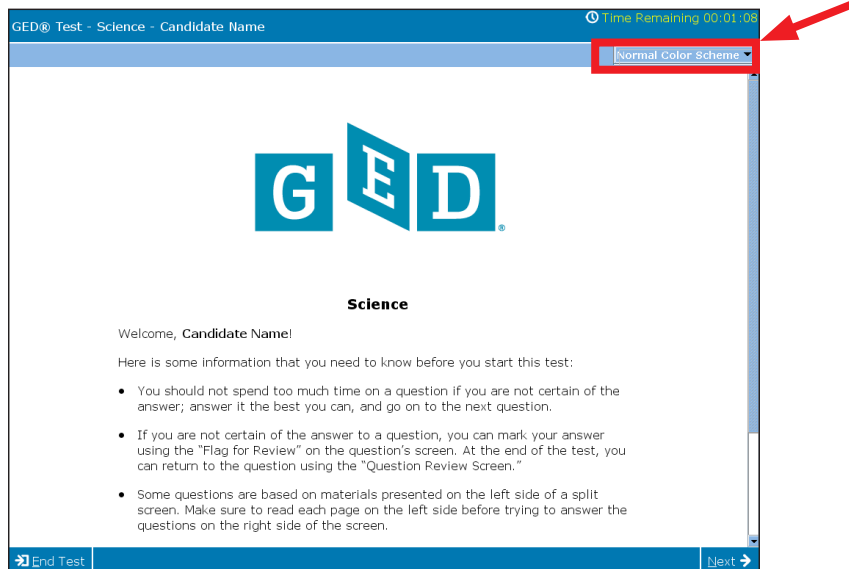


On-Screen Color Combinations for the 2014 GED® Test

When you take the 2014 GED® test, you can change what your test looks like. Choose from 11 different color combinations for your test’s text and background colors. Choose the color combination that is easiest for you to read on your computer screen. You can change the colors at any time during the test, and as many times as you want.

Changing the colors of your test is simple. Just choose the colors from the dropdown menu, shown below in the red box.

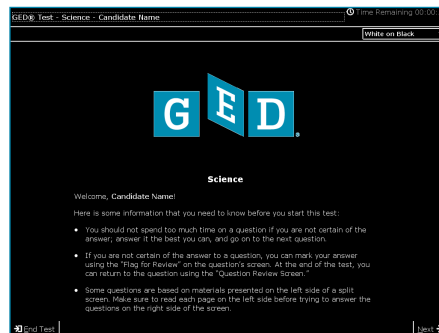


Standard color combination

Here are a few of the text and background color combinations you can choose from on your 2014 GED® test. [Click here to see all available color combinations.](#)



Black on yellow



White on black



Yellow on blue