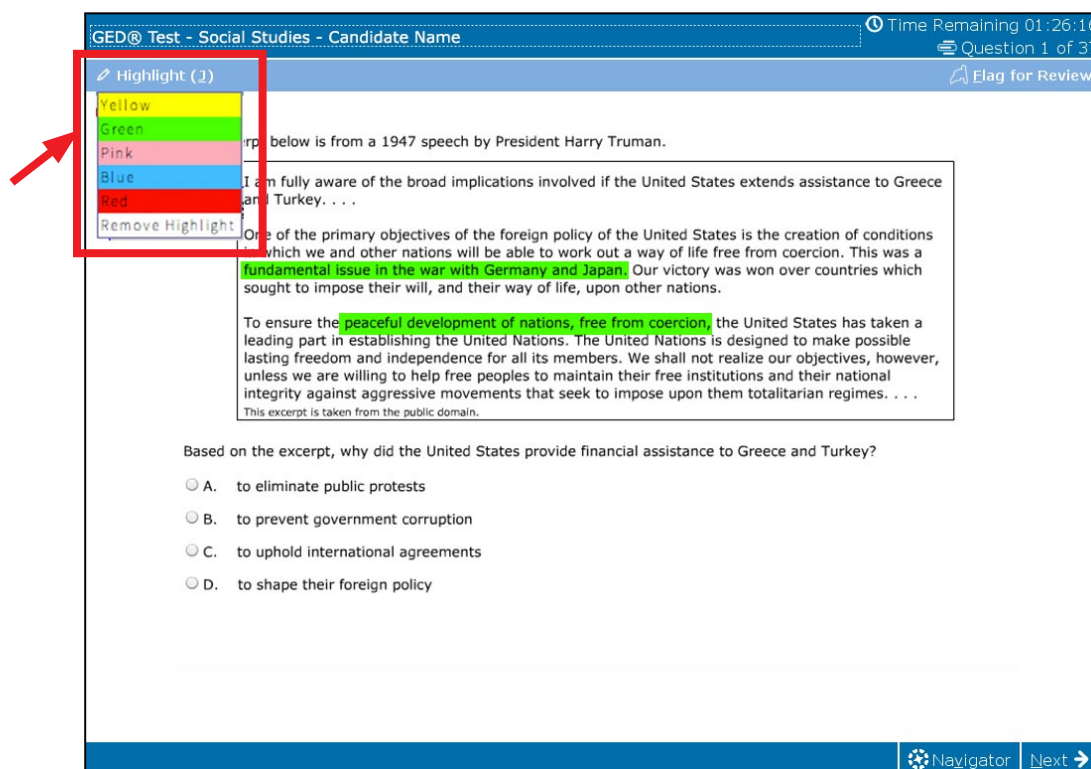


## Highlighting Text on your GED® Test

When taking the GED® test, there are times when you'll want to highlight text on the screen. Maybe you found information or a text passage that you need to come back to. With the highlight button, you can highlight text so you're able to quickly find it again without re-reading the entire page.



### To use the highlight button:

Each question will have a highlight button in the blue toolbar above the question.

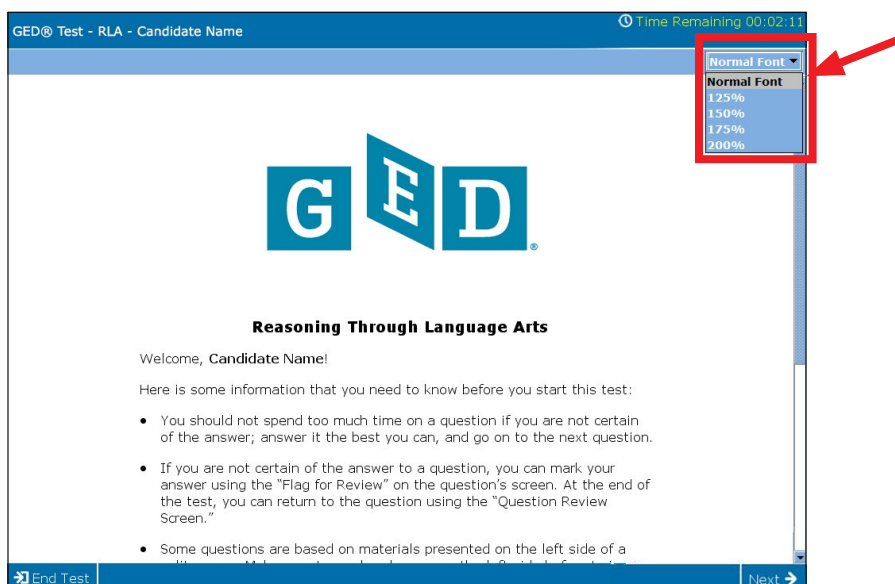
- 1) First select the words you want to highlight
- 2) Click the Highlight button
- 3) Choose a highlight color
- 4) The selected text will be highlighted in that color

Practice using the highlight button before you test in the free computer-based testing tutorial at <https://ged.com/practice-test/en/computer-demonstrator>.

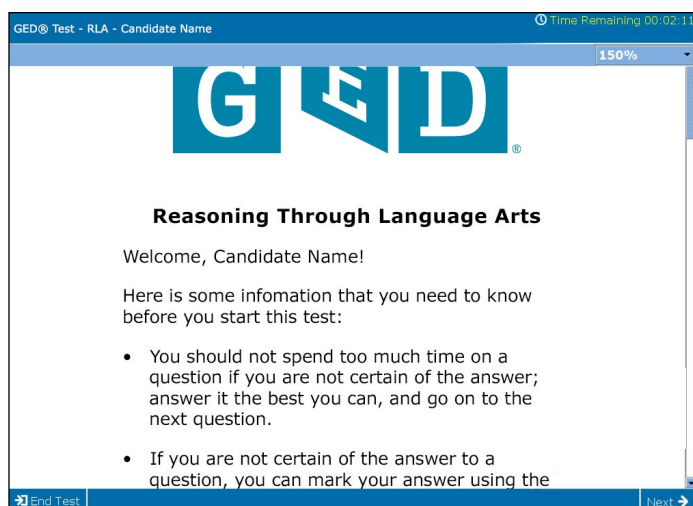
## Change the Text Size on your GED® Test

Making your GED® test on computer easier to read is simple! Choose from one of the five text sizes available on the test. Text sizes include standard (100%), 125%, 150%, 175%, and 200%. The higher the number you pick, the larger the text will be on your test. Choose the size that is easiest for you to read. You can change the size at any time during the test, and as many times as you want.

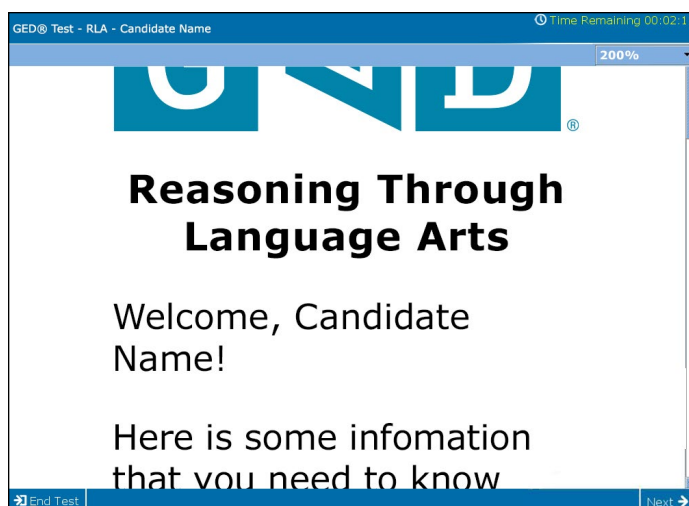
Changing the text size on your test is easy. Just choose the text size that is easiest to read from the “Normal Font” dropdown menu, shown below in the red box.



Here are a few of the text size options you can choose from to make your test easier to read.



Text size at 150%

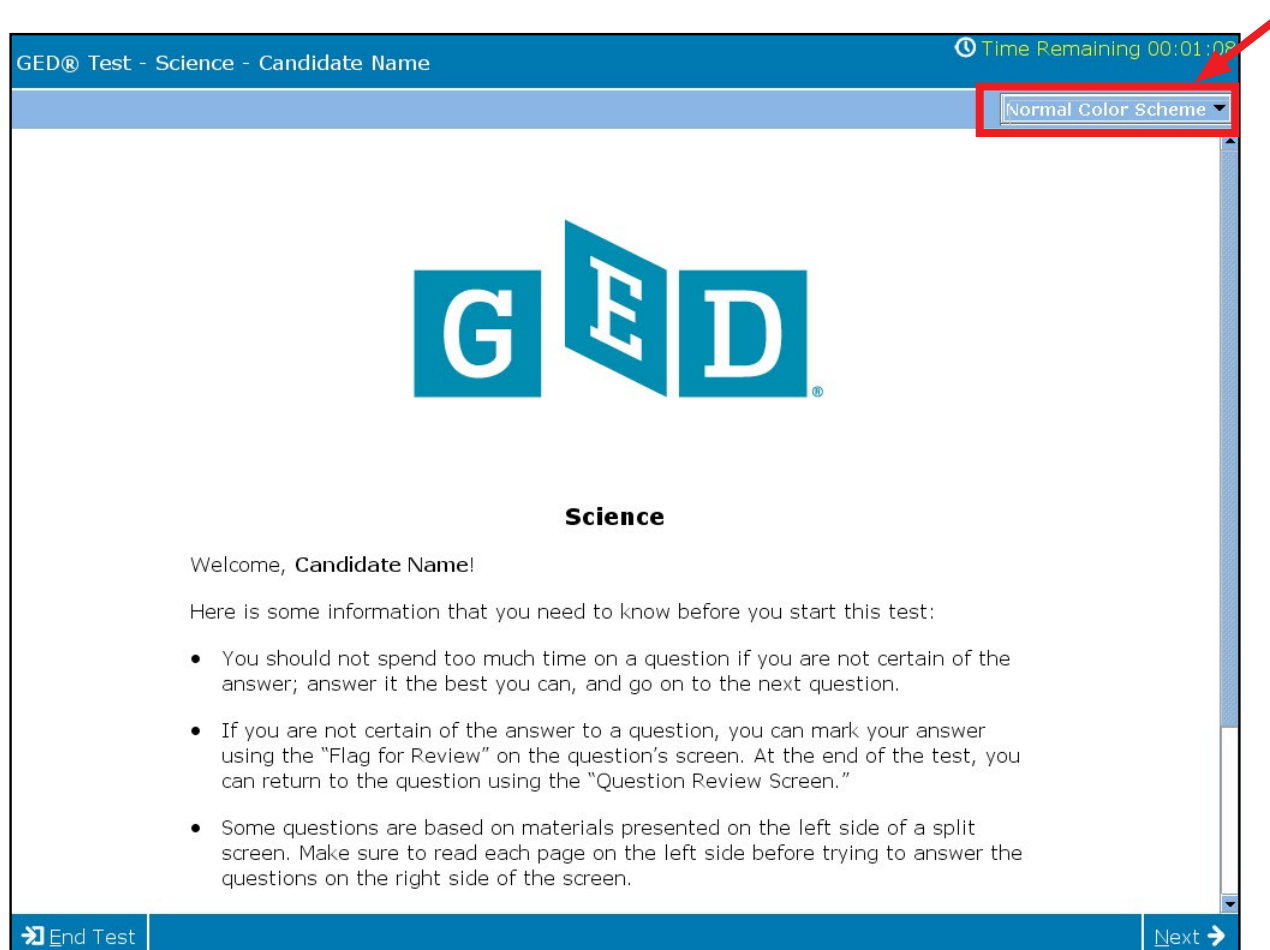


Text size at 200%

## On-Screen Color Combinations for the GED® Test

When you take the GED® test, you can change what your test looks like. Choose from 11 different color combinations for your test's text and background colors. Choose the color combination that is easiest for you to read on your computer screen. You can change the colors at any time during the test, and as many times as you want.

Changing the colors of your test is simple. Just choose the colors from the dropdown menu, shown below in the red box.




Standard color combination

## Normal Color Scheme

GED® Test - Science - Candidate Name
Time Remaining 00:01:08

Normal Color Scheme



**Science**

Welcome, Candidate Name!

Here is some information that you need to know before you start this test:

- You should not spend too much time on a question if you are not certain of the answer; answer it the best you can, and go on to the next question.
- If you are not certain of the answer to a question, you can mark your answer using the "Flag for Review" on the question's screen. At the end of the test, you can return to the question using the "Question Review Screen."
- Some questions are based on materials presented on the left side of a split screen. Make sure to read each page on the left side before trying to answer the questions on the right side of the screen.

End Test
Next →

## Black on White

GED® Test - Science - Candidate Name
Time Remaining 00:00:30

Black on White



**Science**

Welcome, Candidate Name!

Here is some information that you need to know before you start this test:

- You should not spend too much time on a question if you are not certain of the answer; answer it the best you can, and go on to the next question.
- If you are not certain of the answer to a question, you can mark your answer using the "Flag for Review" on the question's screen. At the end of the test, you can return to the question using the "Question Review Screen."
- Some questions are based on materials presented on the left side of a split screen. Make sure to read each page on the left side before trying to answer the questions on the right side of the screen.

End Test
Next →

## Black on Light Yellow

GED® Test - Science - Candidate Name
Time Remaining 00:00:17

Black on Light Yellow



**Science**

Welcome, Candidate Name!

Here is some information that you need to know before you start this test:


- You should not spend too much time on a question if you are not certain of the answer; answer it the best you can, and go on to the next question.
- If you are not certain of the answer to a question, you can mark your answer using the "Flag for Review" on the question's screen. At the end of the test, you can return to the question using the "Question Review Screen."
- Some questions are based on materials presented on the left side of a split screen. Make sure to read each page on the left side before trying to answer the questions on the right side of the screen.

End Test
Next →

## Black on Yellow

GED® Test - Science - Candidate Name
Time Remaining 00:00:01

Black on Yellow



**Science**

Welcome, Candidate Name!

Here is some information that you need to know before you start this test:

- You should not spend too much time on a question if you are not certain of the answer; answer it the best you can, and go on to the next question.
- If you are not certain of the answer to a question, you can mark your answer using the "Flag for Review" on the question's screen. At the end of the test, you can return to the question using the "Question Review Screen."
- Some questions are based on materials presented on the left side of a split screen. Make sure to read each page on the left side before trying to answer the questions on the right side of the screen.

End Test
Next →

## Black on Salmon

GED® Test - Science - Candidate Name
Time Remaining 00:01:22

Black on Salmon



**Science**

Welcome, Candidate Name!

Here is some information that you need to know before you start this test:

- You should not spend too much time on a question if you are not certain of the answer; answer it the best you can, and go on to the next question.
- If you are not certain of the answer to a question, you can mark your answer using the "Flag for Review" on the question's screen. At the end of the test, you can return to the question using the "Question Review Screen."
- Some questions are based on materials presented on the left side of a split screen. Make sure to read each page on the left side before trying to answer the questions on the right side of the screen.

End Test
Next →

## Blue on White

GED® Test - Science - Candidate Name
Time Remaining 00:01:13

Blue on White



**Science**

Welcome, Candidate Name!

Here is some information that you need to know before you start this test:


- You should not spend too much time on a question if you are not certain of the answer; answer it the best you can, and go on to the next question.
- If you are not certain of the answer to a question, you can mark your answer using the "Flag for Review" on the question's screen. At the end of the test, you can return to the question using the "Question Review Screen."
- Some questions are based on materials presented on the left side of a split screen. Make sure to read each page on the left side before trying to answer the questions on the right side of the screen.

End Test
Next →

## Blue on Yellow

GED® Test - Science - Candidate Name
Time Remaining 00:01:02

Blue on Yellow



**Science**

Welcome, Candidate Name!

Here is some information that you need to know before you start this test:


- You should not spend too much time on a question if you are not certain of the answer; answer it the best you can, and go on to the next question.
- If you are not certain of the answer to a question, you can mark your answer using the "Flag for Review" on the question's screen. At the end of the test, you can return to the question using the "Question Review Screen."
- Some questions are based on materials presented on the left side of a split screen. Make sure to read each page on the left side before trying to answer the questions on the right side of the screen.

End Test
Next →

## White on Black

GED® Test - Science - Candidate Name
Time Remaining 00:00:52

White on Black



**Science**

Welcome, Candidate Name!

Here is some information that you need to know before you start this test:

- You should not spend too much time on a question if you are not certain of the answer; answer it the best you can, and go on to the next question.
- If you are not certain of the answer to a question, you can mark your answer using the "Flag for Review" on the question's screen. At the end of the test, you can return to the question using the "Question Review Screen."
- Some questions are based on materials presented on the left side of a split screen. Make sure to read each page on the left side before trying to answer the questions on the right side of the screen.

End Test
Next →

## Light Yellow on Black



## Yellow on Black





## White on Blue

GED® Test - Science - Candidate Name
Time Remaining 00:00:17

White on Blue



**Science**

Welcome, Candidate Name!

Here is some information that you need to know before you start this test:

- You should not spend too much time on a question if you are not certain of the answer; answer it the best you can, and go on to the next question.
- If you are not certain of the answer to a question, you can mark your answer using the "Flag for Review" on the question's screen. At the end of the test, you can return to the question using the "Question Review Screen."
- Some questions are based on materials presented on the left side of a split screen. Make sure to read each page on the left side before trying to answer the questions on the right side of the screen.

End Test
Next →

## Yellow on Blue

GED® Test - Science - Candidate Name
Time Remaining 00:00:01

Yellow on Blue



**Science**

Welcome, Candidate Name!

Here is some information that you need to know before you start this test:

- You should not spend too much time on a question if you are not certain of the answer; answer it the best you can, and go on to the next question.
- If you are not certain of the answer to a question, you can mark your answer using the "Flag for Review" on the question's screen. At the end of the test, you can return to the question using the "Question Review Screen."
- Some questions are based on materials presented on the left side of a split screen. Make sure to read each page on the left side before trying to answer the questions on the right side of the screen.

End Test
Next →