

# Shared Strategies for Student Success

Tuesdays for Teachers  
October 24, 2023



# Welcome!

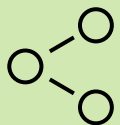
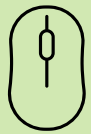


**Debi Faucette**



# In this session, we will...

- Discuss Professional Development
  - What we learned from you
  - How you will guide our future plans
  - Next steps in planning GED Testing Service PD for 2024
- Learn about *With You With Me*, a new GEDTS partner, including
  - What the program has to offer your students
  - How students can access the program
  - The value of the Learning Preference Assessment included in *WYWM*
  - Opportunities for students to connect with technology apprenticeships
- Answer your questions



# Professional Development: *Back to the Future*



# GED Testing Service and Our Partners: Professional Development Reflection

## 2012-2014

Preparing for the 2014 GED Program

- Content Driven
- New Resources
  - \*website
    - student and educator
  - \*tools
    - GED Manager
    - GED Analytics
    - GED Prep Connect
    - Score Report

## 2015-2023

Tuesdays for Teachers

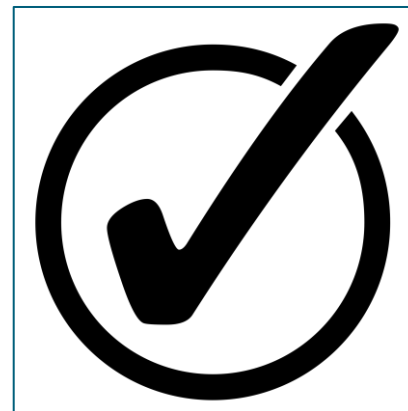
- Content Driven
- Innovative Projects
- Special Interest Topics
- Hot Topics

## 2024

Back  
to the  
Future

# GED Testing Service and Our Partners: We Listened, We Heard Your Requests for

- more content driven sessions
- a train the trainer module at the summer conference
- more training in the use of resources from the website
- More training in the use of operational tools



# GED Testing Service and Our Partners:

## What we know

- Jurisdictions since 2014
  - Seasoned adult educators and administrators
  - Fluid movement of new adult educators and administrators joining throughout the nine years of the GED Program

- More recent Jurisdictions
  - Seasoned adult educators and administrators who have been away from the GED program since 2014
  - Adult educators and administrators with no experience with the GED
  - Fluid movement of new staff into adult education throughout the year

# GED Testing Service and Our Partners: Professional Development Ahead



## Jurisdictional/National Offerings

- State Conferences
- COABE
- Road Shows
- Virtual/Hybrid Sessions
- Small group/Local program PD



## Tuesdays for Teachers

- December 5, 2023
- Beginning 2024:
  - Bi-monthly sessions
  - Driven by participant preferences
  - Tentative
    - January 23
    - March 26
    - May 28



## 2024 Annual GED Conference

- Concurrent Sessions
- Plenary Sessions
- Train the Trainer Track (by invitation)



# Next Step: We need to hear from you

- Today
- InSession/November 15
- Poll will close November 28
- Outcomes to be shared on Tuesdays for Teachers December 5
- Jan, March, May 2024 sessions will be announced

## In Session Educator Newsletter

Stay up-to-date by subscribing

At the bottom of each of the pages is an opportunity to sign up for the In Session Educator Newsletter – please take the opportunity to sign up and stay informed on the latest news, resources, pricing specials, etc.

### In Session Educator Newsletter

[SIGN UP TO GET THE LATEST NEWS AND RESOURCES](#)

GED® Testing Service LLC | GED® Official Website



About Us

Contact Us

FAQs

Newsroom

GEDWorks™

Accessibility Statement

Terms and Conditions

Privacy and Cookies

Copyright © 2018 GED® Testing Service LLC. All Rights Reserved.

40



# Professional Development Poll for Tuesdays for Teacher Topics



# SAVE THE DATE

## 2024 GED Annual Conference

July 23-25, 2024 Long Beach, CA

Sign up to our newsletter to be the first to know when registration opens. [GED.com/educators\\_admins](https://GED.com/educators_admins)



Hotel: Westin Hotel, Long Beach

Overflow Hotel: Marriott, Long Beach



# Generative Artificial Intelligence (GAI)

## What is GAI?

- It's artificial intelligence that is capable of generating text, images, or other media, using generative models. There are many feelings and thoughts about how GAI could impact education.
- We want to hear from you in a survey to learn how we can support you.
- Are you already using it in your classroom?
  - If so, then how are you using it?

# Generative Artificial Intelligence Survey

- Sent in September InSession
- Over 200+ responses so far
- **Survey closes October 26<sup>th</sup>**
- **Link** <https://www.surveymonkey.com/r/XRW2GKS>

# Generative Artificial Intelligence Survey



## Generative Artificial Intelligence Survey

GED Testing Service wants your help to better understand how Generative Artificial Intelligence (GAI) is impacting you and your classroom. GAI is different from Artificial Intelligence (AI) because it independently creates a unique response from knowledge it learned from the internet.

It will take you 1-2 minutes to answer several questions that will help us know how to support you!

The survey will close on October 26th.

OK

0 of 12 answered



# A New GED Testing Service Partner



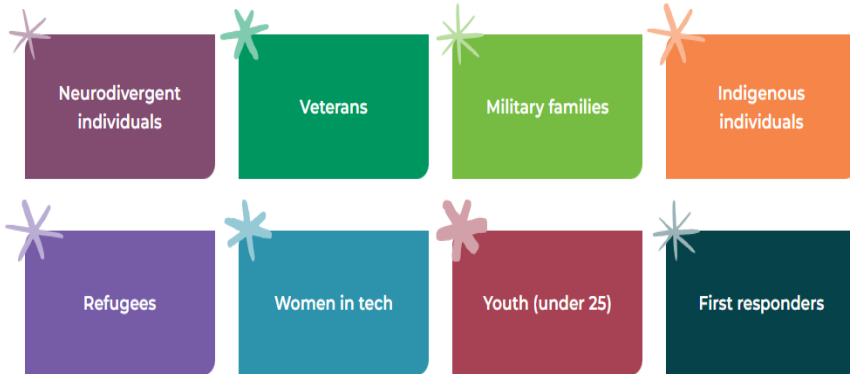
15



# WithYouWithMe: A new GED® partnership

**Every individual deserves access to gainful employment and the skills to thrive in their workplace**

*We provide free training to our communities*



*And more...*

GED Testing Service has partnered with WithYouWithMe to:

- Help more GED learners persist in their GED journey, by understanding their learning preferences
- Uncover their potential through a variety of free aptitude tests
- Provide free training to students and their families to get into Tech careers within months



# Welcome

About us

Get started by selecting what describes you best



## Individual

I am an individual interested in upskilling  
and/or looking for a job.

[SIGN UP](#)



## Enterprise

I am an employer/manager or current  
employee of a company.

[EMPLOYER/MANAGER](#)

[EMPLOYEE](#)

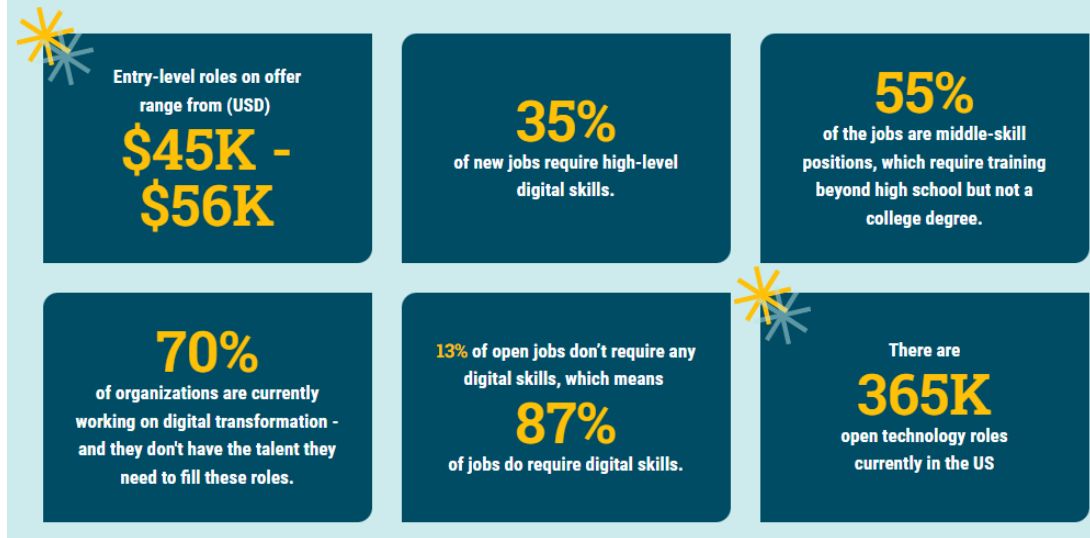
Already have an account? [Log in now](#)

# Tech Apprenticeship opportunities offered to GED grads

Cyber security, Data Analysis, Software development, Digital project management, Robotics, Coding, IT service desk, and more

1. Sign up for WithYouWithMe platform
2. Complete the psychometric and aptitude testing to be matched with tech careers best suited to you
3. Enter one of WithYouWithMe's 11 accredited digital career pathways and complete approximately 150 hours of self-paced digital training
4. Gain access to a network of leading employers looking to hire GED graduates and secure employment

Use the QR code to access the program



Save

X

# My profile

Fill in details once, train and job-see instantly.

Basic details

Skills

Testing report

Tech rank

1 of 6

Profile Testing Report

Debi Faucette24 October 202309:00 am

Culture Fit1

Psychometric Assessment2

Aptitude3

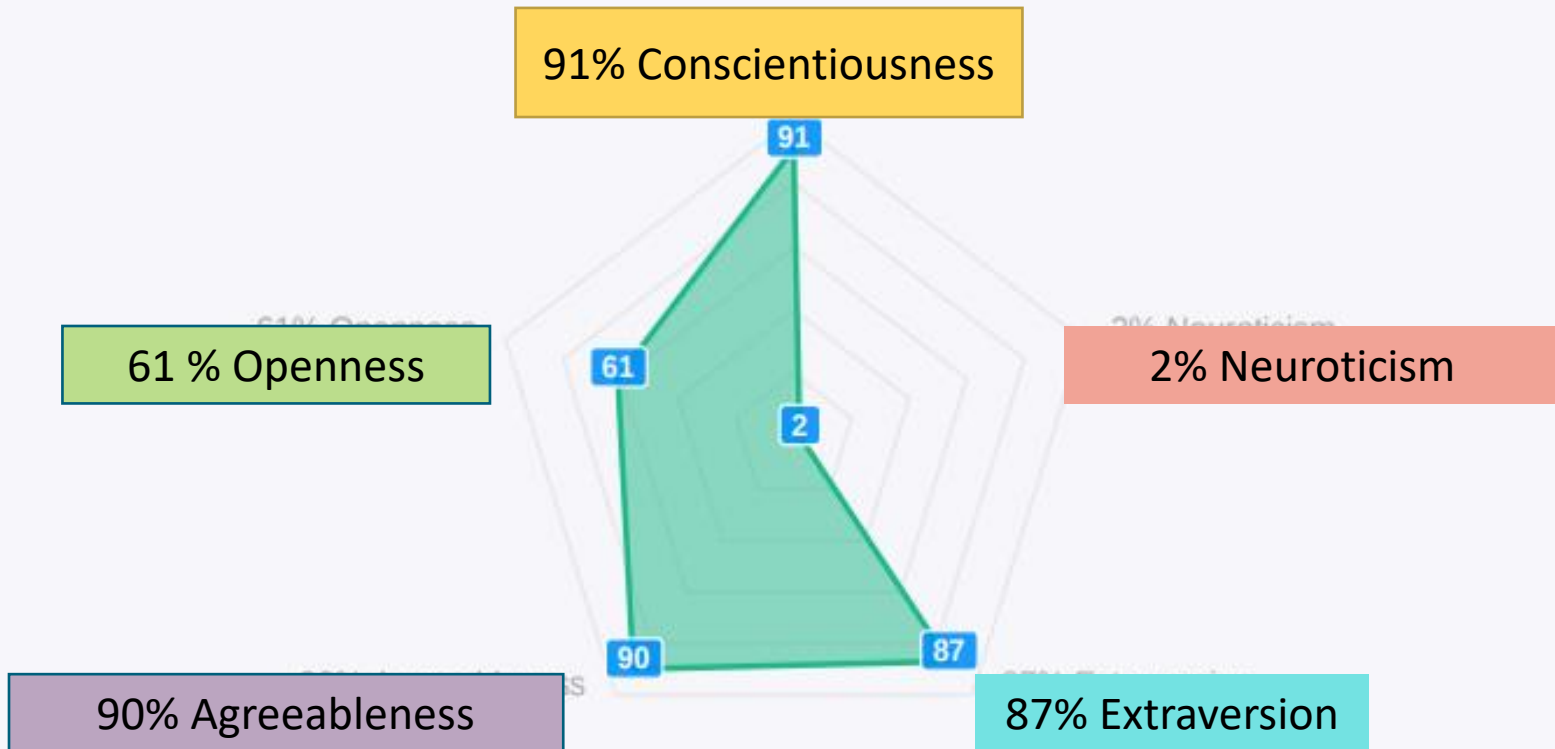
Learning Style4

Career Matches5

Get your profile to 100%

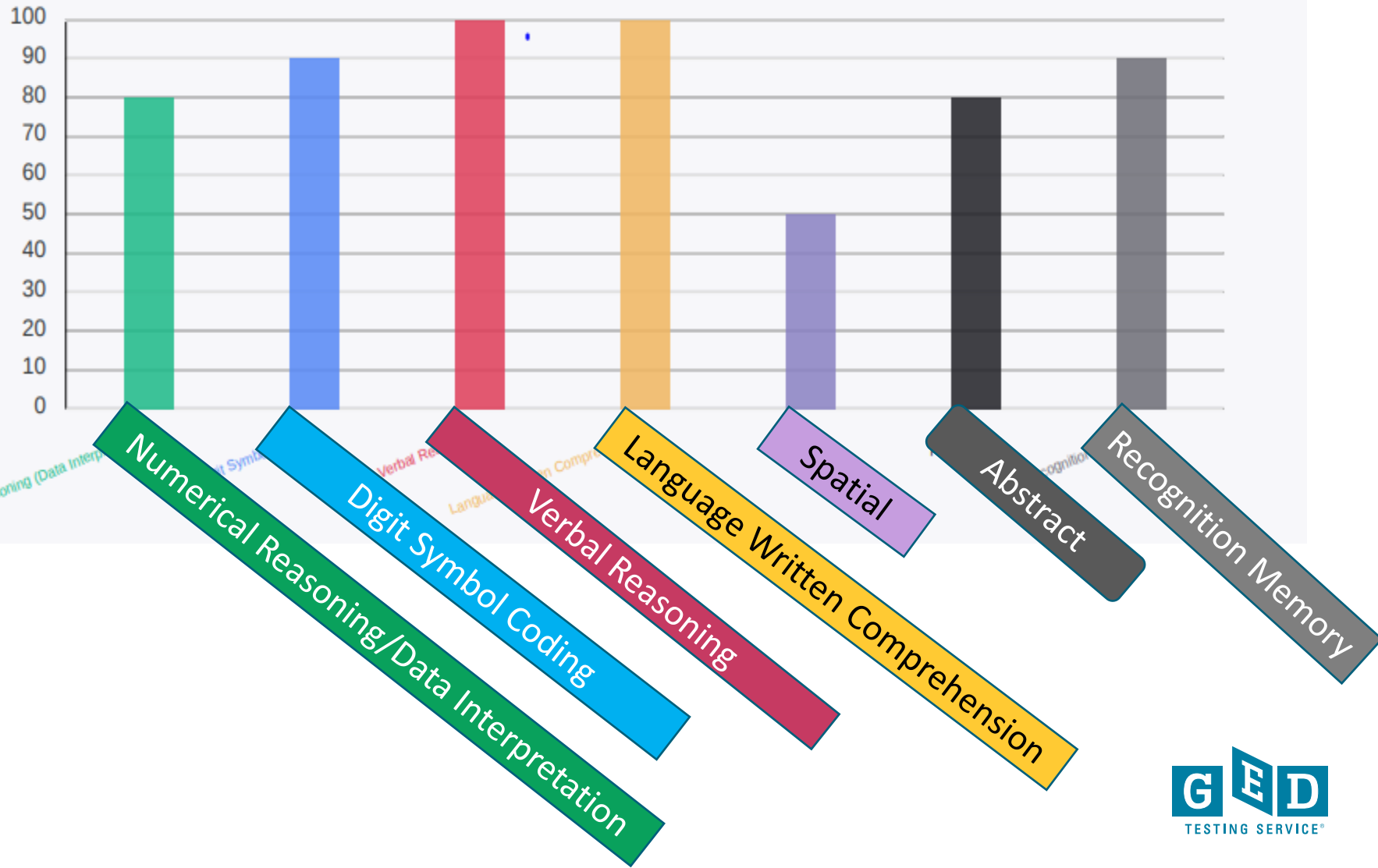
90 %

# Culture Fit Results



# Aptitude Results

We use weighted variables required for real-world jobs. We test by assessing critical thinking and speed, the ability to solve a problem, analyse information, your ability come up with a course of action, articulate them and decide.



# Psychometric Assessment

## Archetype Doer

The Doer is the workhorse of the team who thrives in a process driven and structured environment. They want to be able to execute and deliver on tasks, projects and other responsibilities but can get focused on doing and achieving rather than questioning why a task or process is being undertaken. Doers are typically high in conscientiousness, self-efficacy and achievement striving. They are also typically lower than average in neuroticism and openness to experience. A high ratio of Doers is desirable in mature teams because structure and process are typically in place, and the focus is typically on BAU rather than a disruptive change.



# Psychometric Assessment (cont'd)

Neuroticism



Extraversion



Openness To Experience



Agreeableness



Conscientiousness



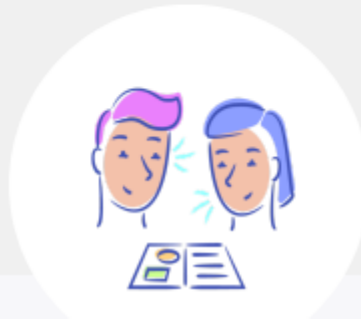
# Learning Style

PROFILE TESTING REPORT



## Your Learning Style is **Interpersonal**

If you have a strong social style, you communicate well with people, both verbally and non-verbally. People listen to you or come to you for advice, and you are sensitive to their motivations, feelings or moods. You listen well and understand other's views. You may enjoy mentoring or counseling others.





# GED.com Study Page now includes Learning Preference Assessment

GED TESTING SERVICE Home Study My Scores More Schedule test

**July 2023**

## Study

No matter how you like to learn, let us help you study for the GED® test.

### GED READY PRACTICE TEST

#### What to study

Find out exactly what you need to study or if you're ready to take a test now with GED Ready's predictive scoring and custom study plan.

[Take GED Ready practice test](#) [See your results](#)

### LEARNING PREFERENCE ASSESSMENT

#### How to study

Everyone learns and studies differently. Your assessment results will tell you how you study the best and match you to tools that align with your style.

[Begin assessment](#) [See all 7 learning preferences](#)

#### GED+

One package with all you need to pass, including a live advisor.

#### GED Classes

Learn from a GED teacher in a classroom setting.

#### Practice

Practice questions and the GED Ready® Practice Test.

#### Study Materials

Prep products and free study guides.

#### Preview the Test

Preview a subject and view computer tutorials.

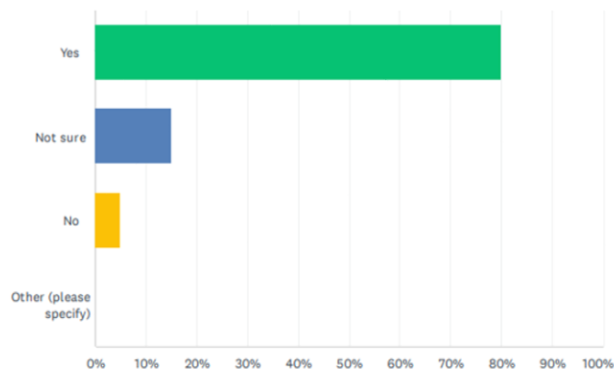
*Fun Fact:*

*50% of candidates who take the assessment already took a GED Ready or a GED test, proving it's never too late to learn about your learning style!*

# Learners and teachers piloted the Learning Preference Assessment, indicating positive influence on studying and likelihood to improve outcomes

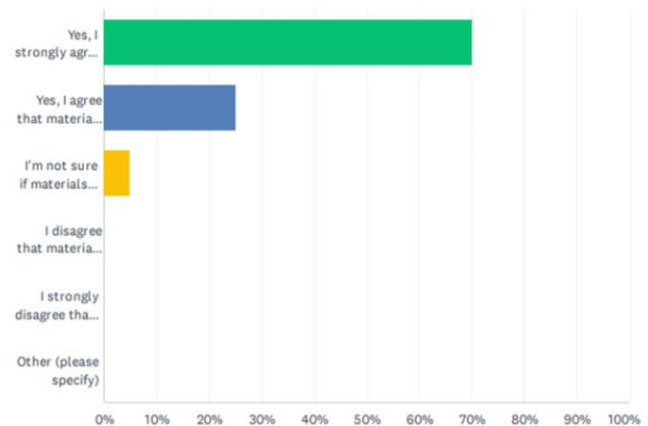
Q5 Will knowing your learning style influence the ways in which you will study for your GED test or other tests in the future?

Answered: 20 Skipped: 0



Q6 Do you think that choosing study materials and methods that align with your learning style will improve your outcomes on your tests?

Answered: 20 Skipped: 0



# Content recommendations are based on outcomes data, accessibility, and meeting the learner's preferred learning style

## Study materials for auditory learners like you

As an auditory learner you can set yourself up for success by hearing a lesson, engaging in group discussions, and repeating back what you learned to a teacher, study partner, or friends and family.



### GED+™

Get everything you need, including a personal GED advisor, study tools, practice tests, and GED tests.

GED+ learners who stick to their GED Advisor's instructions are 2x as likely to earn their high school credential than those who study on their own.



### GED Live™ Online Classes

Interact and engage with Kaplan teachers and classmates in online classes.

GED learners who attend GED Live online classes improve their test scores on average by 55%



### Flash™ Practice Questions

Get hundreds of practice questions with answers and explanations to help you prepare for the test.

GED learners who practice frequently on GED® Flash scored on average 4 points higher on their GED® test

# GED learners are also encouraged to search for local classes, use free materials

## Study materials for auditory learners like you

As an auditory learner you can set yourself up for success by hearing a lesson, engaging in group discussions, and repeating back what you learned to a teacher, study partner, or friends and family.

[See your assessment results](#)



### GED+™

Get everything you need, including a personal GED advisor, study tools, practice tests, and GED tests.



### GED Live™ Online Classes

Interact and engage with Kaplan teachers and classmates in online classes.



### Flash™ Practice Questions

Get hundreds of practice questions with answers and explanations to help you prepare for the test.



One solution for all your studying, practicing, and testing needs.



### Find GED Classes

Prepare with a teacher in-person or online



### Practice

Practice questions and the GED Ready® Practice Test



### Study Materials

Prep products and free study guides



### Preview the Test

Preview a subject and view computer tutorials

# GED Manager users can see student's learning style in student details

**New Student: Tester, WYWM**

---

**Student Detail**

First Name:	WYWM	Phone Number:	612-473-0286
Middle Name:		Age:	37
Last Name:	Tester	Date of Birth:	10/03/1985
Email:	SubjectStudyGuideTest20230707fe1-bfbb-e509ebc3e1ee@ged.com	Testing Jurisdiction:	MN
Mailing Address:	123 Any Way	In Options Program:	No
	Crystal MN 90210 USA	GED Test Prep Center:	
County:		Learning Preference:	Logical (mathematical)
VUE ID:		Last Updated:	07/07/2023 11:14:54 AM
Kibo Customer ID:		Last Login:	07/07/2023 01:02:31 AM
GED ID:	main-ctt-20230707-9949-7399		English
Fictitious Student:	No		

**7 Learning Preferences**

<b>Visual (spatial)</b> Someone who prefers using photographs or pictures. When tasks and information are presented visually, these individuals use their visual memory to learn.	<b>Kinesthetic (physical)</b> Someone who prefers using their body, hands and sense of touch. For these individuals, learning happens when they physically carry out an activity.	<b>Auditory (musical)</b> Someone who learns using sound and music. These individuals prefer to hear something in order to learn, and commit it to memory by saying it out loud.
<b>Interpersonal (social)</b> Someone who prefers to learn in groups or with other people, both verbally and non-verbally. These individuals are both good listeners and communicators.	<b>Intrapersonal (solitary)</b> Someone who prefers to work alone and focusses best without the distraction of others. These individuals learn best when working through concepts independently.	<b>Verbal (linguistic)</b> Someone who prefers using words, both in speech and writing. Learning methods for these individuals include mnemonics and repeating back what they have learnt.
<b>Logical (mathematical)</b> Someone who prefers using logic, reasoning and systems to learn. These individuals easily recognize patterns and connect concepts, and prefer structure and logic when absorbing information.		

OK

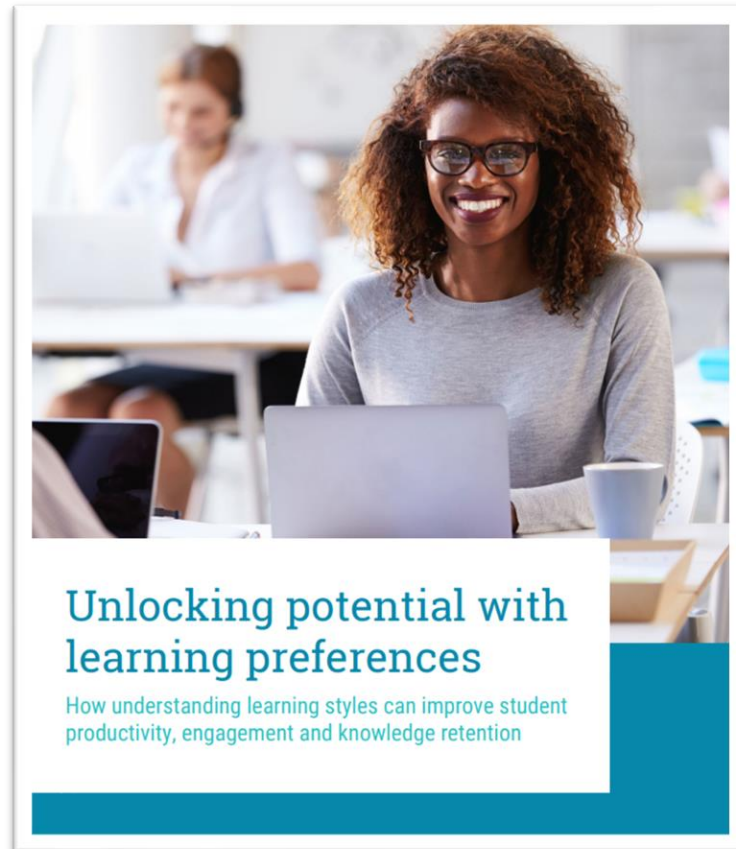
Clicking on the learning style will open a description of all 7



# Guide for teachers to use learning preferences in the classroom

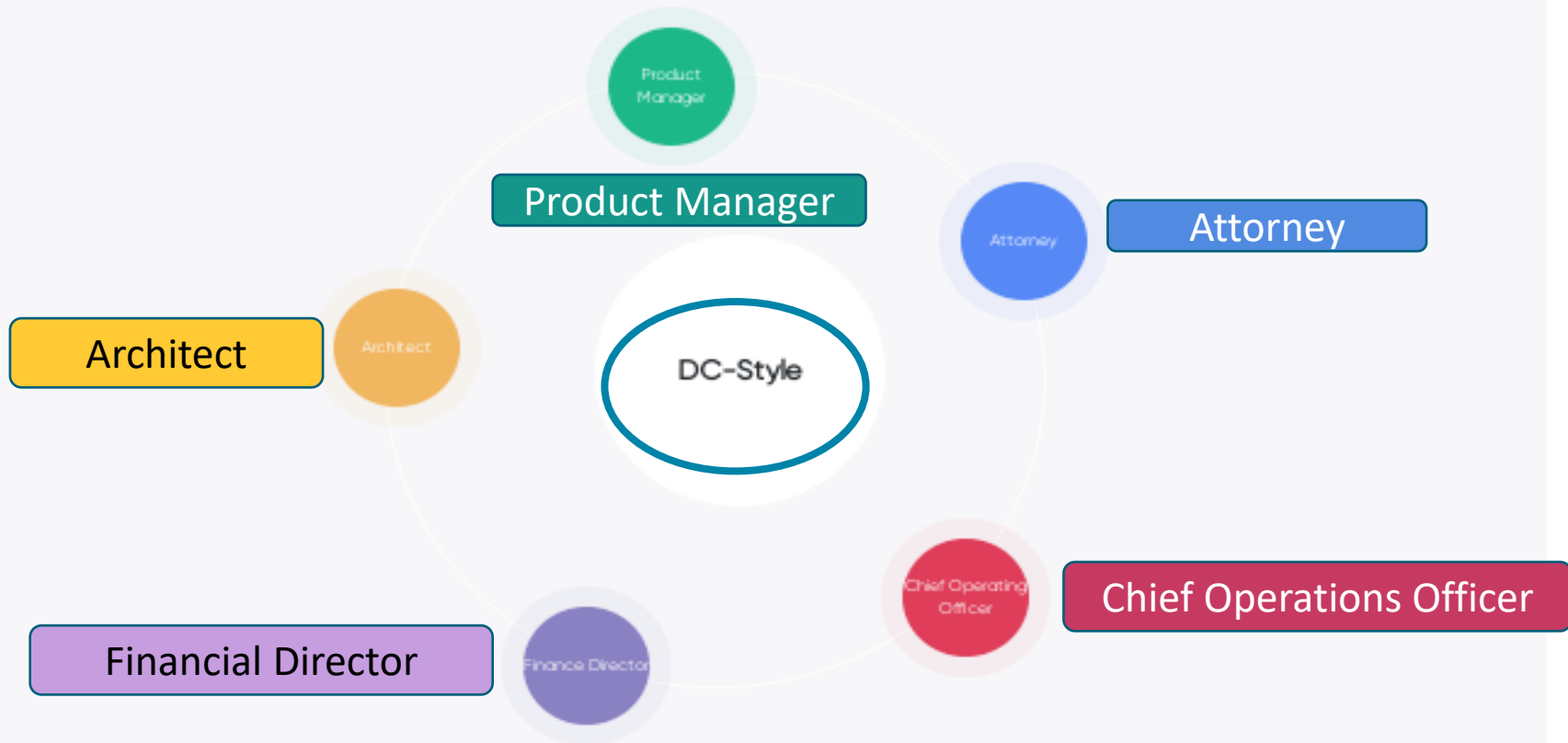
Includes

- Detailed description of each style
- Classroom strategies for each style
- Study suggestions



## Your Personality Type is DC-Style

DC/CD personalities are efficient executors who love to take on ambitious goals and challenges. They are both decisive and analytical, and typically drive forward very quickly to complete tasks with competence. While they can be a strong force to drive changes, their high intensity and desire for control over most situations can create conflicts and stress others out.



# Career Matches

Brought to you by:



Accelerated Pathways™  
GEDWorks™

# GED Tech Apprenticeship™

**October 26, 2023 | 12 noon - 3pm PDT**  
**Loews Hollywood, 1755 N Highland Ave,**  
**Los Angeles, CA 90028**





Join us at our in-person GED Tech Apprenticeship™ Job Expo, where you'll have the opportunity to learn about the GED Tech Apprenticeship™ program, meet our network of employers ready to hire GED grads and participate in interviews for jobs available now.

#### Benefits:

- Learn how you can get certified for your first tech role (with less than 150 hours of free self-paced online training!)
- Meet career coaches who can guide you through the process and recommend next steps
- Participate in job interviews with employers who will be hiring from our attendee pool
- Get inspired by various career paths –available with a GED – a job in tech, a college degree or other opportunities

The GED Tech Apprenticeship™ Job Expo is FREE and open to anyone in the Los Angeles area who has completed their GED credential or is currently preparing to take the GED test.

## FREE ENTRY Sign-up today

First name\*

Last name\*

Email\*

Phone number\*

- ☐ I agree to receive other communications from WithYouWithMe. For more information please review our [privacy policy](#).

Submit

## Employers hiring at the Job Expo



# GED Tech Apprenticeship Job Fair

- \*180 registered
- \*onsite interview
- \*onsite conversations of interest

## Participating Employer:

- Over 200 Tech Openings

**TALLER**

ABOUT US

SERVICES

AI-INSIDE

SUCCESS STORIES

CAREERS

CONTACT US

INSIGHTS

### WE ARE TALLER. TOGETHER.

Win without fighting. Let our game-changing, AI-powered services model give you an unfair advantage in the war for digital talent.



# Thank You!

Communicate with  
GED Testing Service™:

[help@ged.com](mailto:help@ged.com)

[Debi.Faucette@ged.com](mailto:Debi.Faucette@ged.com)

