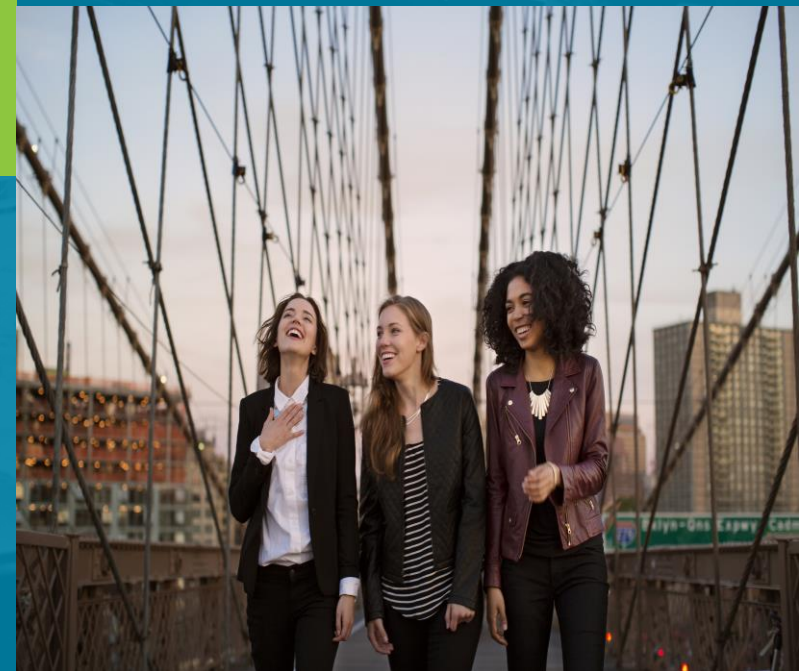


# Accommodations in Correctional Settings

National GED Conference  
July 20, 2023

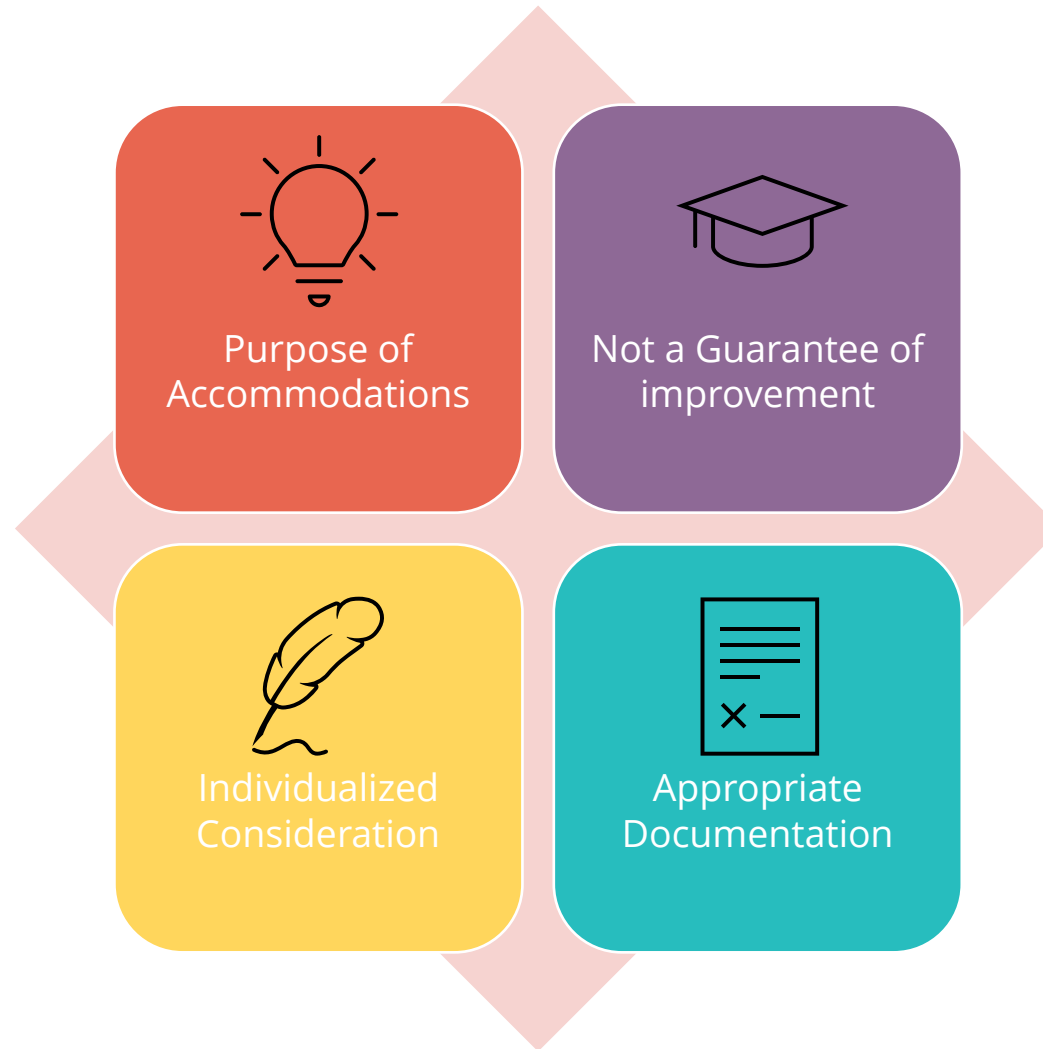


# Agenda

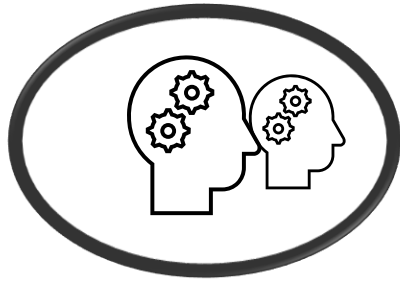
- Overview
- Disability categories
- Accommodation process
- Documentation requirements
- Best way to assist
- Questions



# Accommodations Overview

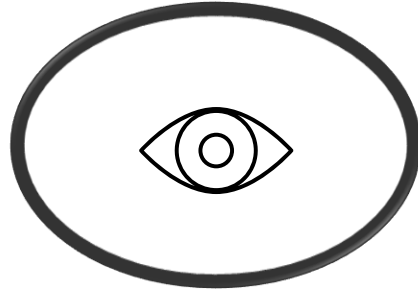


# Categories of Disabilities



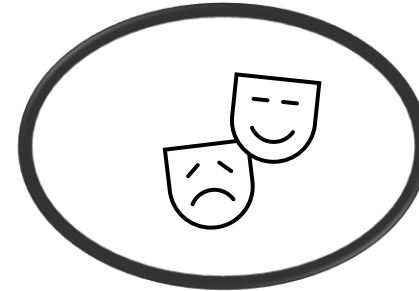
**Learning and Other  
Cognitive Disabilities**

**Documentation within the  
last 5 years**



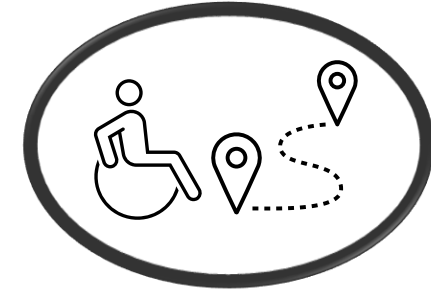
**Attention Deficit  
Hyperactivity Disorder**

**Documentation within the  
last 5 years**



**Psychological and  
Psychiatric Disorders**

**Documentation within the  
last 1 year**



**Physical Disorders and  
Chronic Health  
Conditions**

**Documentation within the  
last 1 year**

# Important Update



Effective August 1, 2023, accommodation approvals will be valid for 2 years.

(some exceptions apply)

# What is NOT considered a disability?

ESL (English as Second Language)

“Slow Learner”

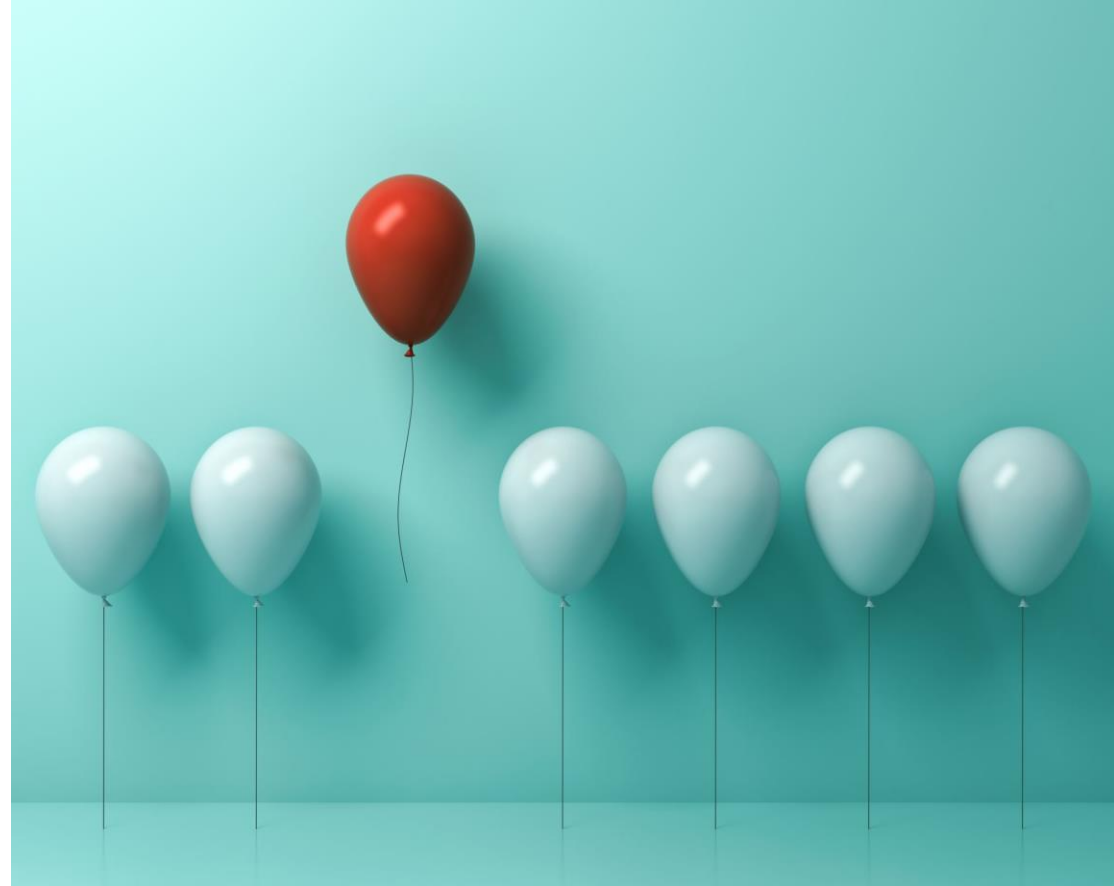
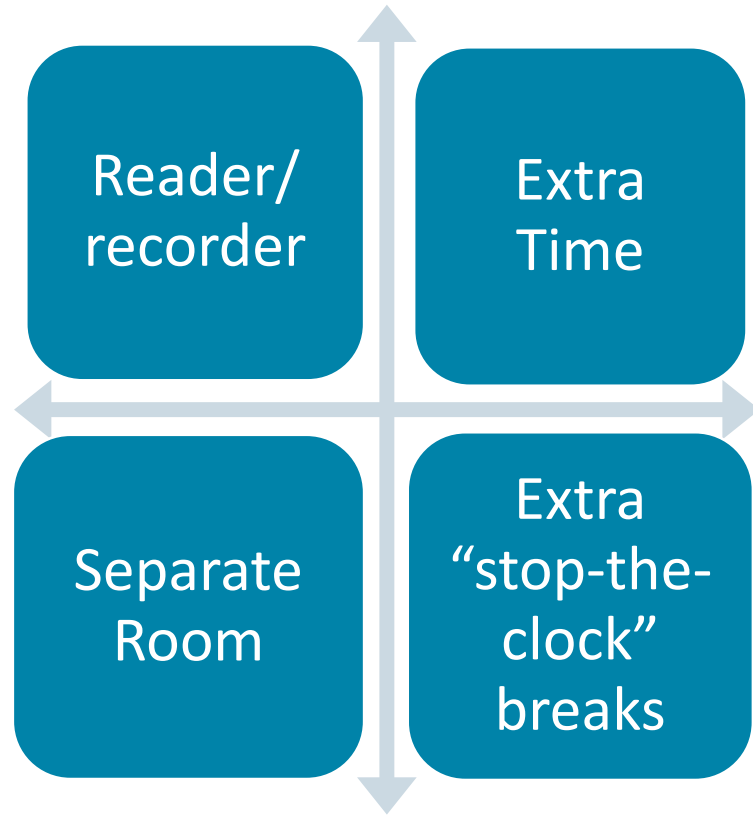
Active substance abuser

Test Anxiety



Homemade diagnoses

# Commonly Requested Accommodations

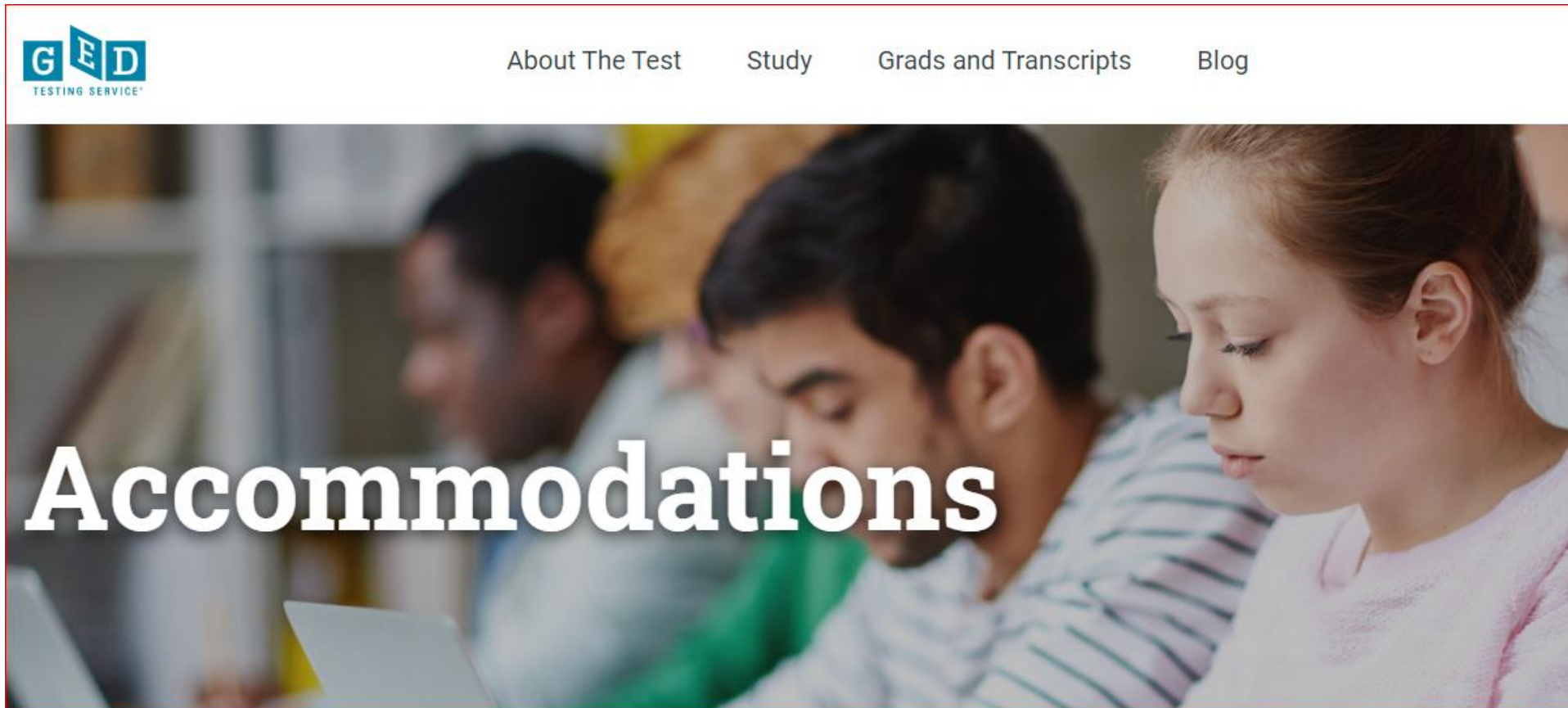




# Documentation Guidelines

Review documentation guidelines:

[https://ged.com/about\\_test/accommodations/](https://ged.com/about_test/accommodations/)





# Steps to apply for accommodations

- GED.com account fully set up – respond yes to accommodation question
- Visit [https://ged.com/educators\\_admins/test\\_admin/corrections/](https://ged.com/educators_admins/test_admin/corrections/) for the necessary forms
- Include a permitted contact and indicate Corrections on the first page
- Email completed requests to [accommodations@ged.com](mailto:accommodations@ged.com) – one student per email
- Do not schedule until a determination is made
- Requests can take up to 30 calendar days to process (12.9) Exceptions apply



# Assistive Technology

Universal Access  
features



Adaptive  
equipment



Magnification



JAWS



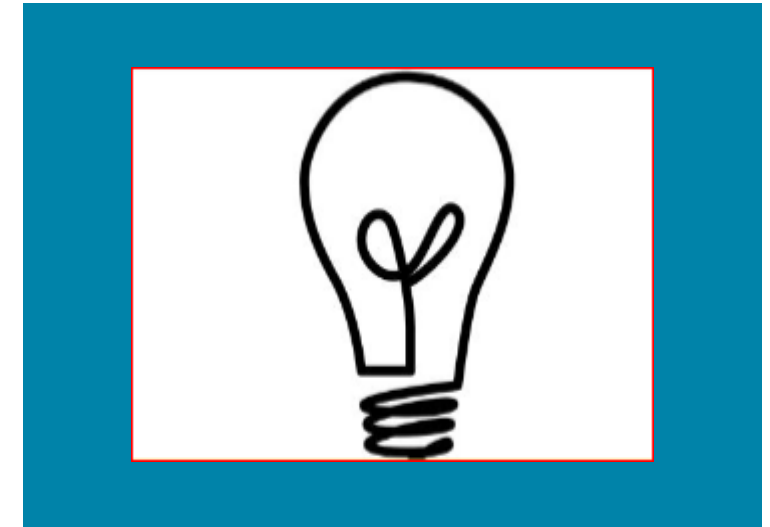
# Emerging Trends in Accommodations and Accessibility



Accommodation vs  
Fundamental Alteration



Accommodations vs  
Security



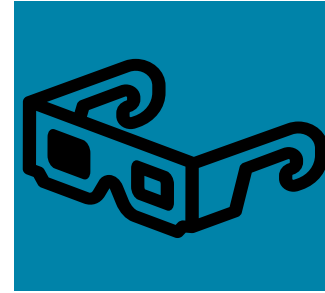
Non-standard requests

# Accommodation Review Process

- Who reviews requests?
- How are determinations made?
  - Consider all documentation
  - Continual calibration
  - Written explanations



# Outer Limits of Accommodations

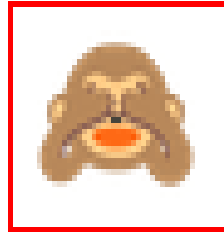


## Unlimited time



The accommodation cannot be so extreme that test validity is compromised

## Waiving a portion of the test



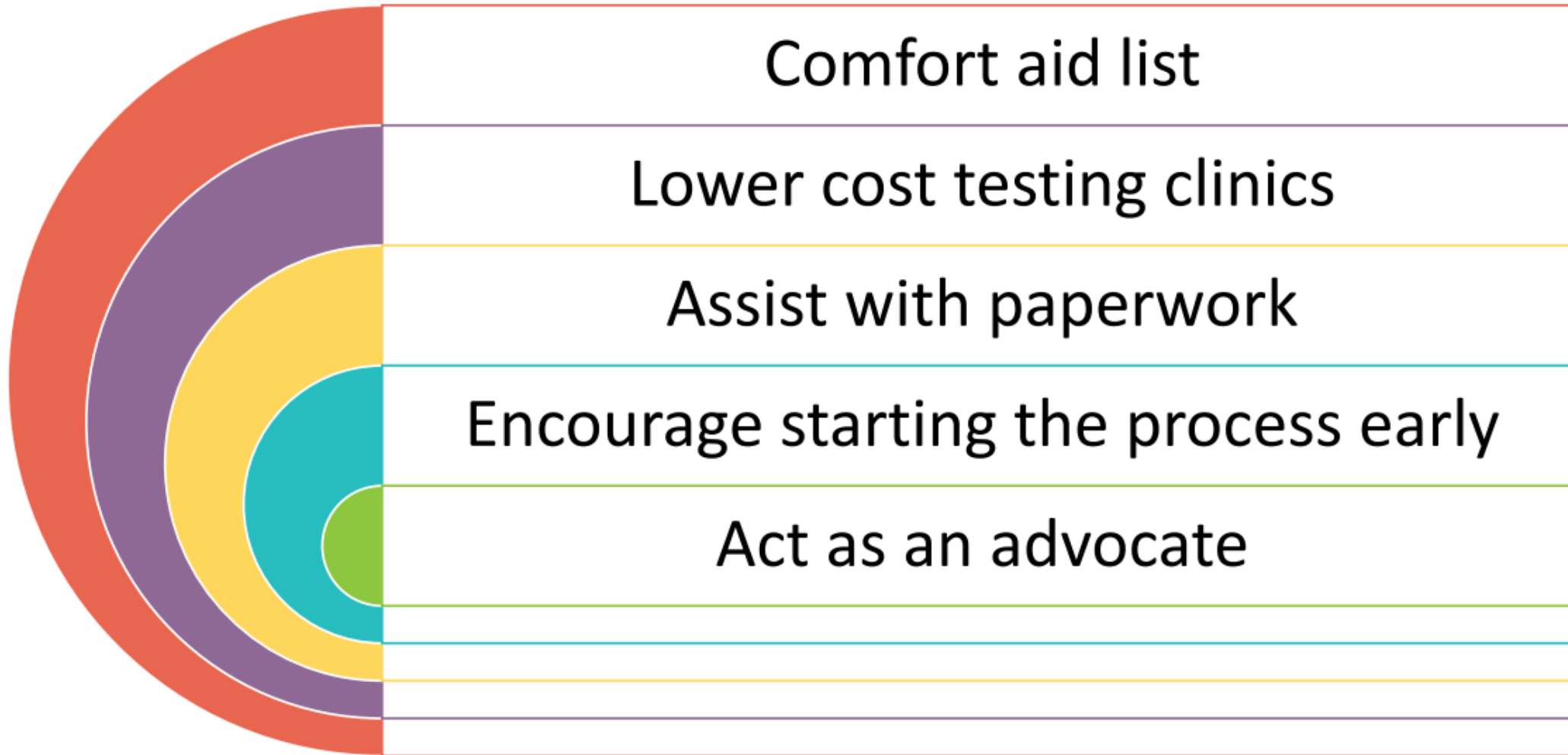
The accommodation cannot fundamentally alter the test's purpose

## Administer medical care



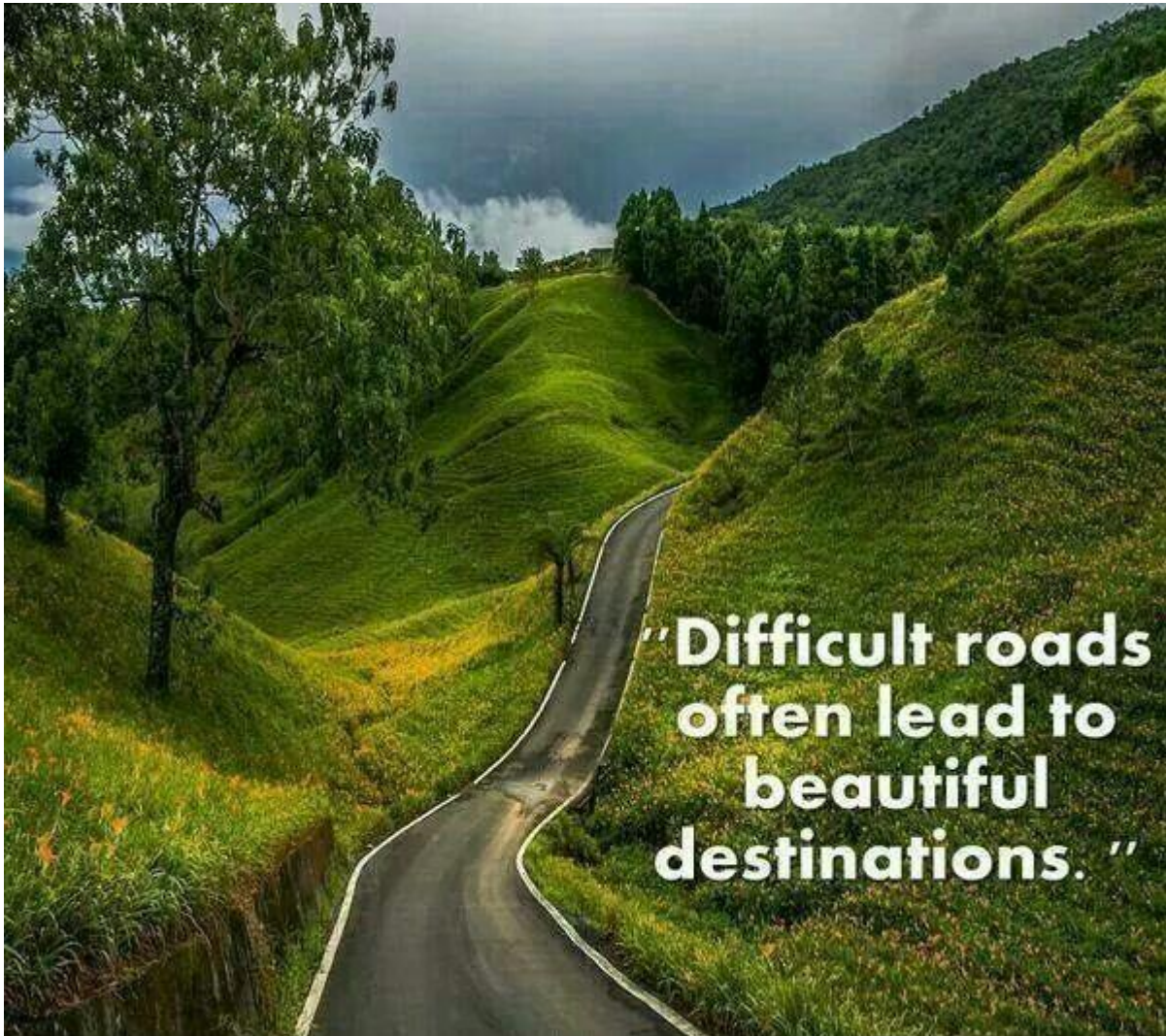
The accommodation cannot jeopardize test security or the safety of staff/others

# How can you help your students?





# Questions?



**“Difficult roads  
often lead to  
beautiful  
destinations.”**

*Special thank you to all who help  
bring equity to GED Testing Service*



# Contact Information

**Debbie Bergtholdt**

*Manager, Accommodations*

*Debbie.Bergtholdt@pearson.com*

***accommodations@ged.com***



# Session Survey

Your feedback is important. Please scan the QR code below to rate this session.

