



# Thank You To Our Sponsors



# Interpreting GED Test Scores for Placement

Annual GED Conference      2022  
Atlanta



# Welcome!



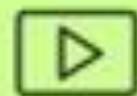
**Debi Faucette**



**Ann Evers**

# In this session, we will...

- Discuss “why this session?”
- Examine the history of the GED Test as it relates to scoring and what can be determined from the scores
- Take a closer look at the 2014 performance levels
  - Discuss the External Evaluation of the 2014 GED Test
  - Review alignment and concordance studies related to the 2014 GED Program
- Provide resources to support placement decisions for HSE, CCR and CCR+credit consideration





# A Bit of GED History

Table 1: Key Changes to the GED

Year	Changes to the GED Testing Program
1942	GED test introduced for veterans. 80% of graduate bound high school seniors said to be able to pass all five batteries
1947	New York offers GED test to high school dropouts
1959	More civilians taking the GED test than veterans
1974	California becomes last state to introduce GED test for dropouts
1978	New series of GED test introduced. Shorter six hour time frame.
1981	Time limit extened to 6.75 hours. National Minimum age for testing abolished
1982	Test standards made more difficult, 75% of graduate bound high school seniors said to be able to pass the entire test
1988	Third series of GED test introduced. First series to include a writing sample. Time extended to 7.5 hours for taking the test
1992	National minimum age for GED test taking of 16 implemented
1997	Passing standards made more difficult, 67% of graduate bound high school seniors said to be able to pass the entire test
2002	Current Series of the GED test introduced. Calculator allowed for first time on parts of the math test. Passing standards made more difficult, 60% of graduate bound high school seniors said to be able to pass the entire test. Test time of approximately eight hours.

Sources: GED Testing Service [2009], Quinn [2008], and GED Testing Service [Various Years].

# Recent History of the GED® Test

## 1988 Series

- Five tests
  - Math, SS, Science, Language Arts, Writing
- Scoring
  - Earn a total 225 pts for a 5-test average of 45
  - Minimum of 40 points per test
  - Essay had to receive a score of “2” to pass

## 2002 Series

- Five tests
  - Math, SS, Science, Language Arts, Writing
- Scoring
  - Earn a total of 2250 pts for a 5-test average of 450
  - Minimum of 410 pts per test
  - Essay had to receive a score of “2” to pass

## 2014 Series

- Four Tests
  - Math, SS, Science, RLA-Reading and Writing
- Scoring
  - RLA-Reading and Writing is ONE score
  - Range is 100-200 pts per content area
  - 145 or higher is passing at HSE level
  - 3 performance levels

# When looking at test scores from any series

You cannot:

- Compare high school grades to GED Test score to draw any comparison or alignment

You can, for all test series:

- Review the transcript to determine the student's placement among the high school seniors who participated in the norming of the test for all test series
- Consider other factors such as length of time from school
- If CASAS/TABE data is available, it may provide additional insights

# When looking at scores from the 2014 series you can...

- Determine the student's performance level for each content area
  - Not passing, 100-144
  - High School Equivalency, 145-164
  - College and Career Ready, 165-174
  - College and Career Ready Plus Credit, 175-200
- Review multiple resources to explain skills evidenced in performance level
  - Performance Level Descriptors
  - Assessment Guide for Educators
- Have confidence that the skills match the performance level
  - External Evaluation
  - Concordance and alignment studies
  - GEDTS Longitudinal Research of GED Graduates



# GED Test Scores Prior to 2014



# College Admissions Considerations

- The percentile ranks on the Official Transcript of GED Test Results are those for graduating high school seniors, not for adult candidates
- Students who passed the GED Test surpassed 40% of the graduating seniors
- GED Standard Score can be used to estimate U.S. national class rank. i.e., 50% percentile as the cut for admission would compare to the GED Standard Score of 500
- An average standard score of 610 would be comparable to the top 10% of graduating seniors, possibly making them eligible for merit scholarships

## GED Standard Score and Estimated National Class Rank (U.S.) of Graduating High School Seniors

GED  
Standard Score

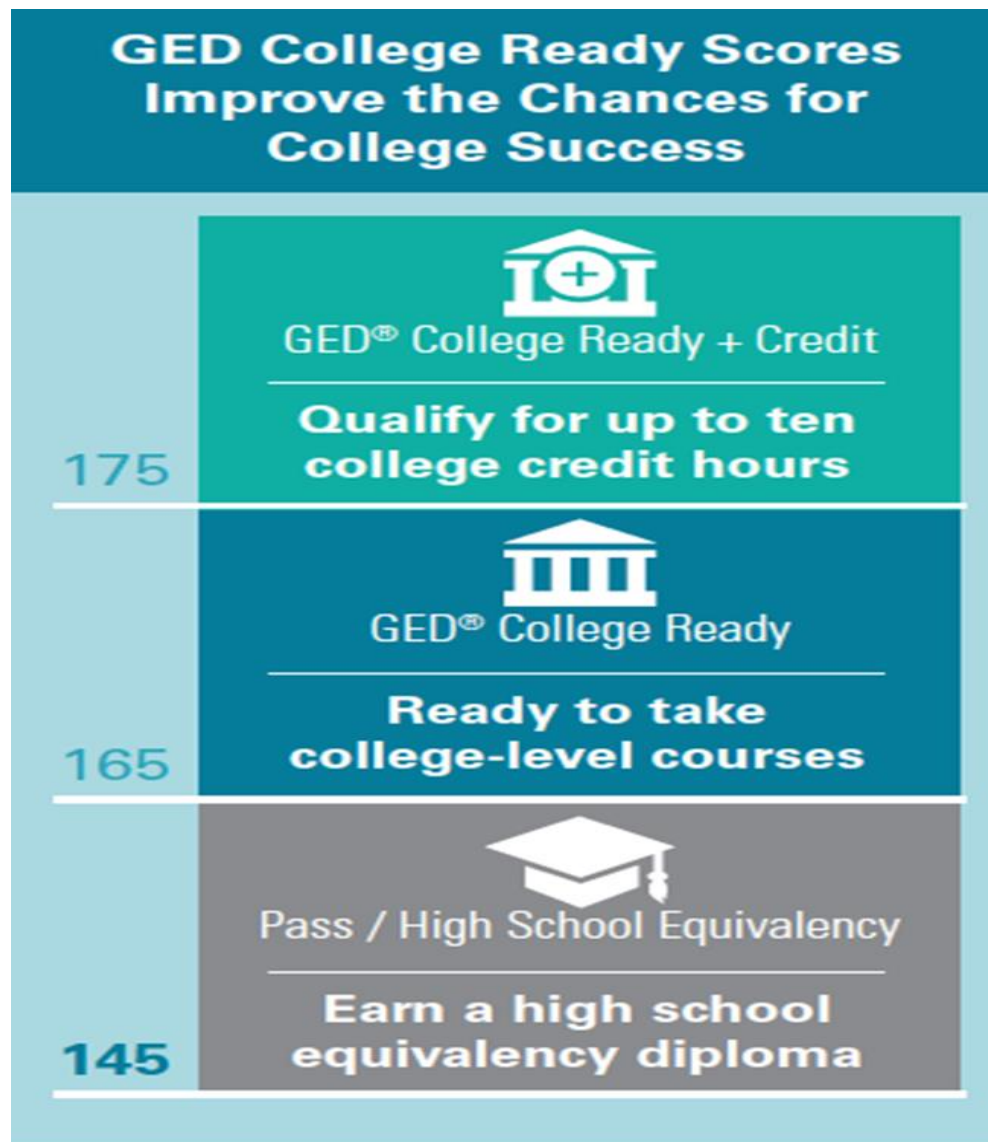
Estimated National  
Class Rank

700 .....	Top 1%
670 .....	Top 2%
660 .....	Top 3%
640 .....	Top 5%
610 .....	Top 10%
580 .....	Top 15%
570 .....	Top 20%
550 .....	Top 25%
530 .....	Top 33%
520 .....	Top 40%
500 .....	Top 50%
460 .....	Top 55%
450 .....	Top 60%

# GED Test Scores 2014 Series



# Scoring of the GED Test



# Confidence to Offer the Recommendations

## Background

- Research and External Evaluation
- Concordance and Alignment Studies
- CASAS Alignment Studies

## Resources to Define a Student's Test Performance

- Assessment Guide for Educators
- Performance Level Descriptors

# GED Score Levels Explained

GED College Ready scores improve the chances for college success.

**145**



## GED Passing Score

To pass the GED test, students need a score of 145 on all four subjects.

**165 – 174**



## GED College Ready

At 165 or higher, students may qualify to bypass placement testing and remedial (non-credit) courses in college.

**175 – 200**



## GED College Ready + Credit

At 175 or higher, students may qualify for up to 10 college credit hours at participating colleges.

Learn more at [GED.com/collegeready](https://GED.com/collegeready)



# Adoption of College Ready Recommendations - GED



Since introduction of the CR and CR + Credit score levels college leaders, elected officials and policymakers are increasingly interested in how they can help put these recommendations into practice. Nearly 200 colleges and systems have already implemented policies to allow students at the CR level to bypass all or part of their placement exams and be placed in credit-bearing courses. Many colleges are also awarding college credit for CR+ scores.

## ACE CREDIT<sup>®</sup> and the GED<sup>®</sup> Test

Since 1974, the American Council on Education College Credit Recommendation Service (ACE CREDIT<sup>®</sup>) has connected workplace learning with colleges and universities by helping students gain access to academic credit for training taken outside traditional degree programs.

ACE CREDIT<sup>®</sup> reviews are conducted by teams of experienced college and university teaching faculty and psychometricians.

- The teams review the content, scope, and rigor of an organization's training programs or assessments
- They examine how well the programs or assessments align with current college and university curricula

An ACE CREDIT<sup>®</sup> team has assessed whether the content of the GED<sup>®</sup> test reflects college-level work and also looked at 18 months of test-taker performance data. Based on the ACE CREDIT<sup>®</sup> team's recommendations, GED Testing Service created the GED<sup>®</sup> College Ready and GED<sup>®</sup> College Ready + Credit score levels.

- **GED<sup>®</sup> College Ready:** Test-takers who score in the GED<sup>®</sup> College Ready level (165-174) demonstrate the skills needed to start college-level courses and should qualify for waivers from placement testing or developmental education requirements.
- **GED<sup>®</sup> College Ready + Credit:** Test-takers who score in the GED<sup>®</sup> College Ready + Credit level (175-200) demonstrate some of the skills that are taught in college-level courses and may be eligible for up to 3 credits in Math, 3 credits in Science, 3 credits in Social Studies, and 1 credit in English.

# Adoption of College Ready Recommendations - GED

## Applying ACE CREDIT® Recommendations



GED Testing Service works with [ACE's College and University Partnerships \(CUP\)](#) and the [ACE CREDIT® College and University Network](#) to broaden knowledge about GED® College Ready and GED® College Ready + Credit and encourage acceptance of credit recommendations. The network consists of more than 2,000 institutions that consider ACE CREDIT® recommendations for transfer to degree programs.

## A Guide for Admissions Officers



About one in twenty students entering postsecondary schools holds a high school credential earned by passing the GED® test. Learn how admissions officers can evaluate GED® graduate applicants.

[Download](#)

## In Session Educator Newsletter

[SIGN UP TO GET THE LATEST NEWS AND RESOURCES.](#)

# GED® Test Outcomes Research Update

- Evidence that GED® Graduates are better prepared for success in college than ever before



# BEYOND THE GED<sup>®</sup> → TEST

GED graduates are more prepared for college than ever!



2018 National Student Clearinghouse data match

GED College Ready scores improve the chances for college success.

# Important Partnership for Data: CASAS and GED Testing Service

- Important partnership to benefit students and those who support them through preparation and testing
- CASAS conducted cooperative studies with HSE providers
  - An adult learner's performance on CASAS reading and math assessments predicts readiness to pass the GED
  - Results appear on the Individual Skills Profile as the "Likelihood of passing..."
- Provides checks and balances to assure an accurate accounting of students served and their progress
  - Affects funding and program stability

# Likelihood of Passing the GED® Test based on CASAS Math or Ready GOALS Scores

## CASAS – Diagnostic

**NRS levels based on  
CASAS Reading or Math  
Goals**

**Likelihood of Passing  
GED**

**6**

**High –  
Ready to Pass**

**5**

**Medium – May Pass,  
more study may be  
needed**

**4 or below**

**Low –  
More Study Needed**

## GED Ready®- Assessing Readiness

**Three Score Level Indicators**

**Likely to Pass**

**145-200**

**Too Close to Call**

**134-144**

**Not Likely to Pass**

**100-133**



# Correlation Between Various Placement Instruments For Reading Language/Writing Mathematics Elementary Algebra

GED Test Annotations: This document has annotations indicating correspondence between the GED Test Scaled Scores of 150 and 165 with the scores on SAT and ACT in the English language arts and mathematics content areas. While the GED Testing Service did not do a direct analysis between ACCUPLACER and the GED Test, we did collect SAT and ACT data during the time of our Standardization and Norming Study for the 2014 test in the fall of 2013.

## PERFORMANCE LEVEL CONCORDANCE

**TABE Reading Grade Level/CPT Reading Scale Score/ SAT Verbal Score/  
Enhanced ACT Reading Score/ASSET Reading Skills Score/  
COMPASS Reading Scale Score**

<b>TABE Grade Level</b>	<b>ACCUPLACER Reading Scale Score</b>	<b>SAT Reading Score</b>	<b>ENHANCED ACT Reading Score</b>	<b>ASSET Reading Skills Score</b>	<b>COMPASS Reading Scale Score</b>
	102	450	21	45	87
	103				
	104	460			
	105		22	46	89
	106				
	107	470			
	108	480			
	109	510	23	47	91
	110	520			
	111				
12.9	112	540	24	48	92
	113		26	49	94
	114				
	115				
	116		27		
	117	560			
	118				
	119				
	120				

**PERFORMANCE LEVEL CONCORDANCE**  
**TABE Writing Grade Level/CPT Sentence Skills Scale Score / SAT**  
**Verbal Score/Enhanced ACT English Score/ASSET Writing Skills Score/**  
**COMPASS Writing Scale Score**

<b>TABE Grade Level</b>	<b>ACCUPLACER Sentence Skills Scale Score</b>	<b>SAT Verbal Score</b>	<b>ENHANCED ACT English Score</b>	<b>ASSET Writing Skills Score</b>	<b>COMPASS Writing Scale Score</b>
	105	420			
	106	430			
	107	440			
	108		22		
	109	450	23	49	92
	110	460			
	111	470	24	50	94
	112	480			
	113	490	25		
	114	500	26		
	115	510	27	52	98
	116	520			
	117	540			
12.9	118		28		
	119			54	99
	120	560	30		

**PERFORMANCE LEVEL CONCORDANCE**  
**TABE Mathematics Grade Level/CPT Arithmetic Scale Score/  
 SAT Math Score/Enhanced ACT Math Score/  
 ASSET Numerical Skills Score/COMPASS Pre-Algebra Scale Score**

<b>TABE Grade Level</b>	<b>ACCUPLACER Arithmetic Scale Score</b>	<b>SAT Math Score</b>	<b>ENHANCED ACT Math Score</b>	<b>ASSET Numerical Skills Score</b>	<b>COMPASS Pre-Algebra Scale Score</b>
	96				
	97	420			
	98				
	99	430	18	42-43	50-53
	100				
	101	440			
	102	450			
	103	460	19	44-45	58-61
	104	480			
	105	490			
	106	510			
	107	520			
	108	530	20	46	66
	109	540			
	110	570			
	111				
	112				
	113	600			
	114	610	21	47	73
	115				
12.9	116		23	49	82
	117				
	118		29	54	97
	119				
	120	630	33		

# The Assessment Guide for Educators

Covers all content areas

- Item types
- Assessment targets
- Guidelines for how items are scored
- More . . .

[https://ged.com/educators\\_admins/teaching/teaching\\_resources/](https://ged.com/educators_admins/teaching/teaching_resources/)

## Assessment Guide for Educators

This resource takes a deep dive into what's assessed in the four content areas, question types, scoring, and more. You can download the entire Guide below, or you can choose to download the individual content areas.

[Complete Assessment Guide for Educators](#)

[Assessment Guide Introduction](#)



### Assessment Guide - Mathematical Reasoning

[View Now](#)



### Assessment Guide - Reasoning Through Language Arts

[View Now](#)



### Assessment Guide - Social Studies

[View Now](#)




### Assessment Guide - Science

[View Now](#)


# Teaching Resources

## Teaching Resources - GED



### Teaching Resources


Lay the groundwork for effective instruction and guide your students to develop the skills they need to succeed using these resources.



#### Educator Handbook

Get an overview of GED® test content and recommended teaching strategies.


[Download](#)



#### Skills Students Need to Pass

See exactly what skills students need to demonstrate to pass and to attain each score level.

[Learn more](#)



#### High Impact Indicators

Skills are not all created equal! Improving certain skills can help students improve in other areas. These resources provide detailed guidance on how you can best help improve student performance.

High Impact Indicators -- [View in Spanish](#).

HII Relationships Across Content Areas -- [View in Spanish](#).

Help students test with confidence!



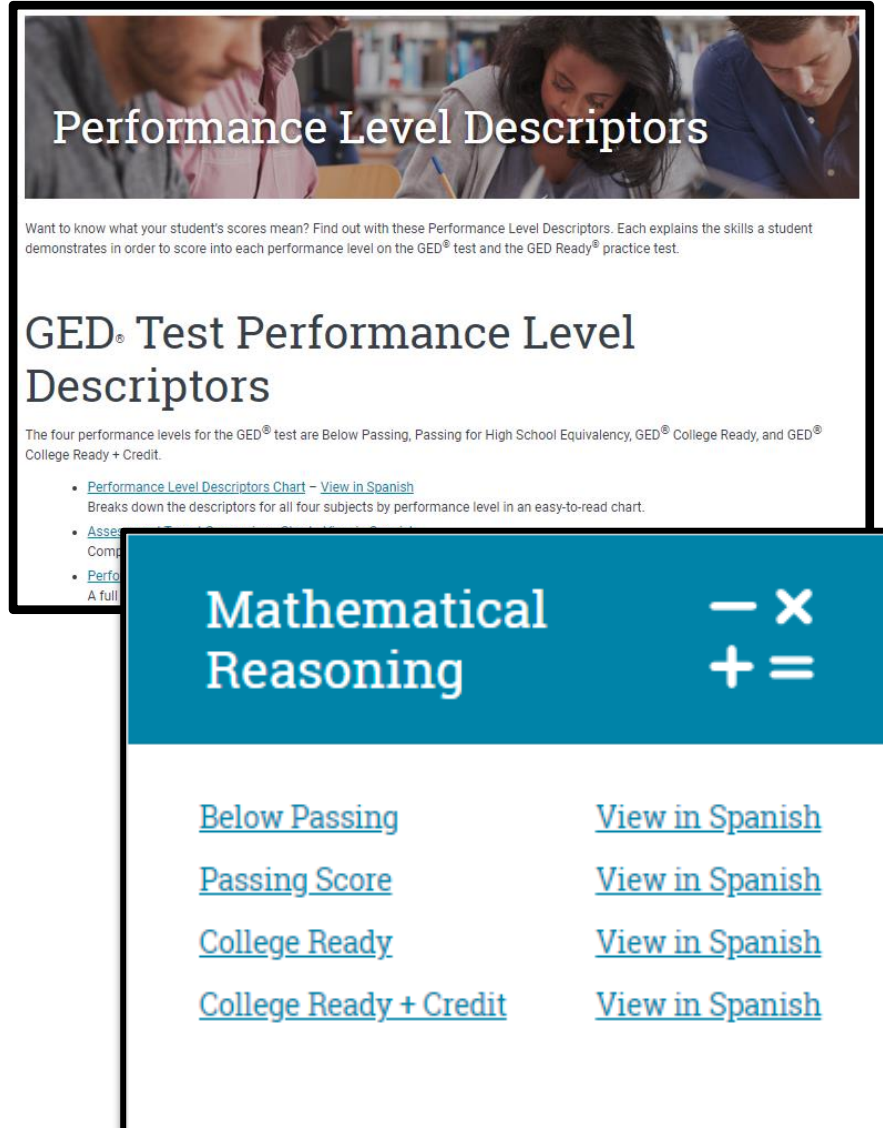
Order **FREE** professionally printed (Math & Calculator) posters for your classroom.



# Performance Level Descriptors

- Four Performance Levels
  - Below Passing
  - HSE
  - GED® College Ready
  - GED® College Ready + Credit
- What skills are demonstrated at each level
- What skills need development to advance to the next level

[https://ged.com/educators\\_admins/teaching/teaching\\_resources/plds/](https://ged.com/educators_admins/teaching/teaching_resources/plds/)



**Performance Level Descriptors**

Want to know what your student's scores mean? Find out with these Performance Level Descriptors. Each explains the skills a student demonstrates in order to score into each performance level on the GED® test and the GED Ready® practice test.

## GED® Test Performance Level Descriptors

The four performance levels for the GED® test are Below Passing, Passing for High School Equivalency, GED® College Ready, and GED® College Ready + Credit.

- [Performance Level Descriptors Chart](#) – [View in Spanish](#)  
Breaks down the descriptors for all four subjects by performance level in an easy-to-read chart.
- [Assessment](#)  
Compares the GED test to other high school equivalency tests.
- [Performance Level Descriptors](#)  
A full list of the skills and knowledge students need to demonstrate at each performance level.

### Mathematical Reasoning

<a href="#">Below Passing</a>	<a href="#">View in Spanish</a>
<a href="#">Passing Score</a>	<a href="#">View in Spanish</a>
<a href="#">College Ready</a>	<a href="#">View in Spanish</a>
<a href="#">College Ready + Credit</a>	<a href="#">View in Spanish</a>

# Professional Development

Operations  
to  
Content  
and  
Points  
in Between

# Tell Us How We Can Support You

- State, regional, and district conferences
- Content & Operational Specific Sessions for District or School
  - Research and observations from Math, RLA, Science & Social Studies
  - Navigating the tools and resources: GED Manager, Analytics, Accommodations
- Small Group Q&A Sessions
- And there is always:



# GED Manager Overview

*Roles: Jurisdictional, Student  
Authorized View Role, and  
Corrections Role*



# GED Manager

```
graph TD; GM[GED Manager] --- TA[Test Administrators  
Jurisdictional Access]; GM --- E[Educators  
(GEDPrep Connect)  
Student Authorized View]; GM --- C[Corrections];
```

**Test Administrators**  
**Jurisdictional Access**

**Educators**  
**(GEDPrep Connect)**  
**Student Authorized View**

**Corrections**

# Common Capabilities Across All Three Roles:



Student Search



Student Test Activity Report



Passers Report



Student Score Reports: GED Ready and GED operational tests





**GED Works™**

**Building a  
Stronger  
Workforce**

# GEDWorks™: Growing and Serving

- More than 75 participating companies
- Number of GED Advisors has increased five-fold to serve participants
- Our most recent addition:



- Share the list with students who may already be employed or are seeking employment-they may be eligible
- Go to:  
<https://ged.com/gedworks/>  
for the complete list of participating companies

# Observations:

## Working Together to Better Serve Students



# Underage Students

If you are underage, you must meet one of the following additional requirements:

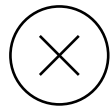
- **You must be within 60 days of your 18th birthday** (regardless of school enrollment status).
- You are within 60 days of when you would have graduated from high school had you remained in school and followed the usual course of study. (Candidates testing under this criterion may **not** be enrolled in high school.)
- You are 17 years of age; have been out of school for at least 60 consecutive days; and provide a letter of request for the test from the military, a postsecondary educational institution, or a prospective employer. **The letter is to be provided to a test administrator at a local Pearson VUE test center that delivers the GED® test for the administrator's review and approval.**

For those testing on the **Online Exam**:

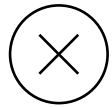
- Online testing is available in California for any test-taker who meets the eligibility requirements for California.
- A test taker under the age of 18, with an approved waiver from the California Department of Education due to additional requirements may be eligible to test.
- A parent or guardian must be present at the pre-test check-in to give consent and authorize the under 18 test taker to be recorded during testing. If the parent or guardian is not present, the exam session will be revoked.

# Underage Students

What happens when a student is underage and is more than 60 days from their 18<sup>th</sup> birthday?



Student enters an incorrect birthdate to be allowed to continue registration; then has score revoked when they request to correct their birthdate after testing



Student finds an “age and residency friendly” state to take the test in only to find additional requirements, such as a Civics test they cannot access

**There is a possible remedy: Request at Waiver from the CDE!**

# Waiver Request for Underage CA Student Partnership between CDE and GEDTS

## California Department of Education (CDE)

- Student submits documentation to the High School Equivalency (HSE) Office
- HSE Office will review the circumstances for the request
- HSE Office will approve or deny the request
- If approved, HSE Office will contact GED Testing Service

## GED Testing Service (GEDTS)

- Contacts the student to determine where and when they want to test
- Notifies the testing center of the date and time when the student will test and other testing specifics
- GED Operations team will manage post testing system edits to ensure accurate credential issuance

# California Residency Requirements

- Do I need to prove I'm a resident of California to take the test?

**YES**

- There are 11 bulleted examples of documentation that will prove residency on the [www.ged.com](http://www.ged.com) website under the California State Policy page.
- If none of the 11 examples are appropriate, direct students to the 12<sup>th</sup> bullet



# California Residency Requirements

The 12<sup>th</sup> bullet reads:

- Completion of the California High School Equivalency Declaration of California Residency



**California High School Equivalency  
Declaración de Residencia de California**

**Debi Faucette**

Debi.Faucette@ged.com

**Ann Evers**

Ann.Evers@ged.com



# Thank You!

*Let's stay connected*

*Communicate with GED Testing Service™:*

*help@ged.com*

